



A HIGHER LEVEL OF CONFIDENCE

Replacement Battery Installation

For Use with Sinergy SEII Series UPS's

User Installation Instructions

**Floor
Mount**

Replacing Battery(s):



A Chloride Power Protection Company

Warning: Prior to starting the battery replacement, please read the entire instructions for important Safety procedures and time restrictions.



NOTE: To obtain new battery(s), contact ONEAC Technical Services at 847-816-6000, toll free at 800-327-8801 option 3 or in Europe at +44 (0) 1235 861962.



WARNING: Safety while performing the following procedure is PARAMOUNT and must be performed by qualified electrically trained personnel familiar with battery safety. Most, if not all, of the connections are handling lethal voltages anywhere from **230VAC** to as high as **700VDC** while the unit is in operation.



NOTE: The UPS cannot protect against power outages while the batteries are disconnected.



WARNING:

- Servicing of batteries should be performed or supervised by personnel knowledgeable about batteries and the required precautions.
- The batteries installed in the UPS and in the external battery cabinets contain electrolyte. Under normal conditions the containers are dry. A damaged battery may leak electrolyte that can be dangerous in contact with the skin and cause irritation to the eyes. Should this happen, wash the affected part with copious amounts of water and seek immediate medical attention.
- When replacing batteries, replace with the same type and number of batteries or battery packs.
- Do not dispose of batteries in a fire. The batteries may explode.
- Do not open or damage the battery cases. Released electrolyte is harmful to the skin and eyes and may be toxic.
- A battery can present a risk of electrical shock and high short-circuit current. The following precautions should be observed when working on batteries:
 - Remove watches, rings or other metal objects
 - Use tools with insulated handles
 - Wear rubber gloves and boots

- Do not lay tools or metal parts on top of batteries
- Disconnect charging source prior to connecting or disconnecting battery terminals

The UPS does not require maintenance by the user, however, battery maintenance is recommended in accordance with IEEE Recommended Practice for Maintenance, Testing and Replacement of Valve-Regulated Lead-Acid (VRLA) Batteries for Stationary Applications

(IEEE Std 1188-1996). When the batteries expire, trained battery service personnel must replace them. A certified disposal/recycling company should carry out disposal / recycling of the UPS and / or batteries. Exhausted rechargeable batteries are classified as “harmful toxic waste” and as such the law demands that they be disposed of / recycled by an authorized recycling center.

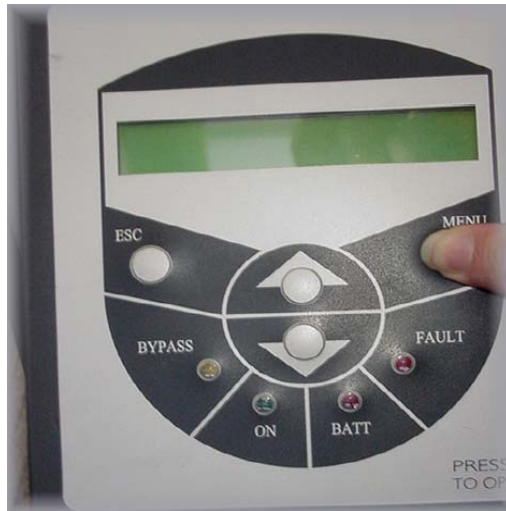
The manufacturer’s service center is fully equipped to deal with such batteries, in accordance with the law and with the greatest respect for the environment. Contact Technical Support to arrange for maintenance and/or battery replacement.

The typical battery life cycle is 3 to 5 years, at an ambient temperature of 77°F (25°C), however battery life is also dependent on the frequency and duration of mains failures or battery discharge cycles.

To replace internal batteries:

If the units that need battery replacements are in a 2 or 3 unit parallel configuration that is currently in operation stop! You must place each unit individually into static bypass and then verify that they all went to Bypass.

Note: There is a one minute time limit to get thru the menu to have all units in bypass to prevent DC Bus fault.



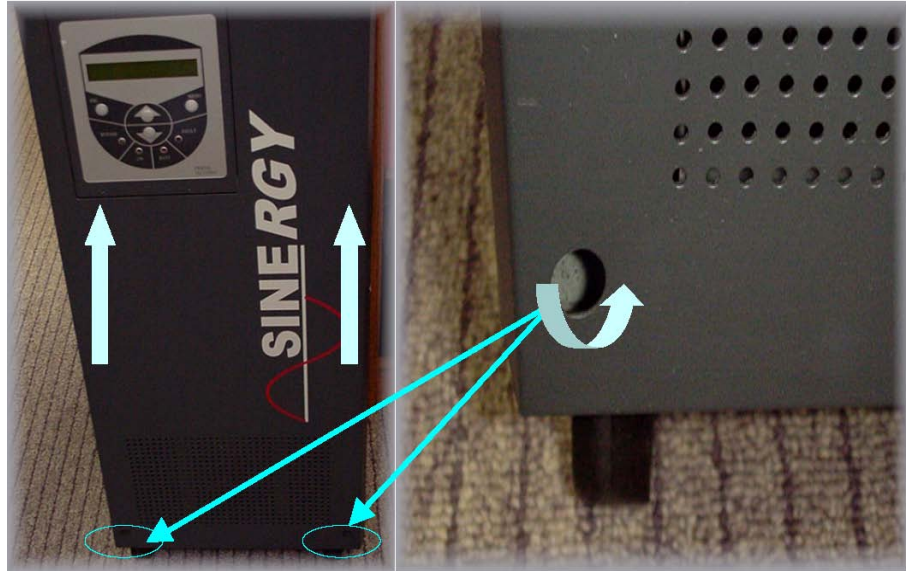
To put units in Static Bypass:

1. Press the "Menu" button.
2. Select Submenu "Control."
3. Press "OK."
4. Select Submenu "Turn UPS ON/OFF."
5. Press "OK" The control panel displays "Turn UPS to Bypass"
6. Press "OK" to switch off the inverter.
7. The display should read "UPS Bypass Output" and the Bypass LED should be lit.

At this time the unit should be in Static Bypass.

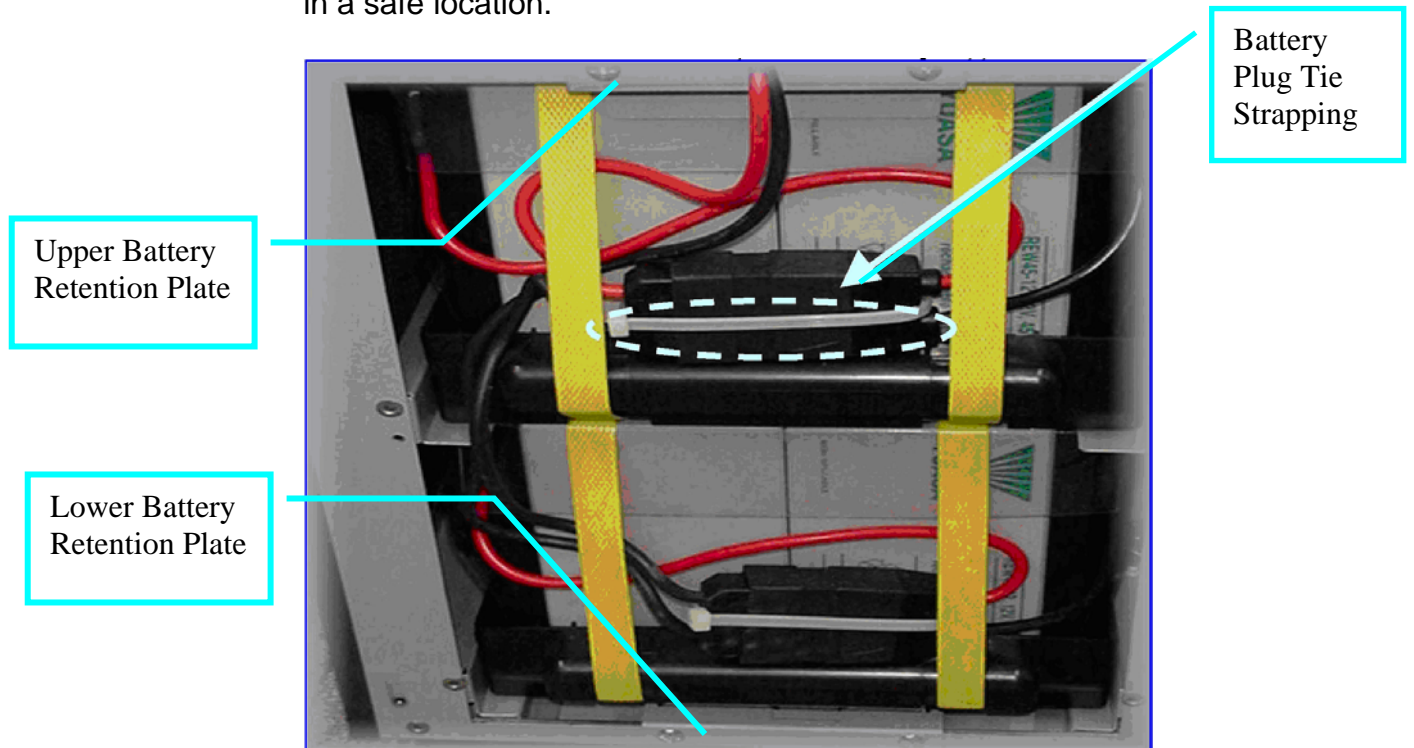
NOTE: The UPS cannot protect against power outages while the UPS is in static Bypass.

8. Ensure that the display is latched in the out / extended position.



9. Remove the two (2) screws in the bottom of the front cover. Locate the screws as per the picture above.

10. Lift the front cover plate up and off of the unit. Place it aside in a safe location.



11. Cut and remove Plastic Battery Plug Tie Strap. Strap is used to keep battery plug together during shipping and not necessary after final installation.

12. Remove two (2) screws from each upper and lower battery retention plates, remove plates and lay them aside for reinstallation later.



CAUTION: Battery pack is heavy. Use two hands when removing pack from unit.

13. Disconnect battery connectors and slide them out thru the yellow strapping to get them out of the way.

14. Slide out battery pack.

15. Slide in replacement battery pack.

16. Slide battery connectors back thru the yellow strapping and Re-connect the battery connectors. Ensure proper connection.

17. Re-attach Upper and Lower battery retention plates with two (2) screws each.

18. Reinstall front cover plate and two (2) retention screws.

To place the unit back online use the following steps:

Note: If the unit is a parallel unit follow the steps listed in the user manual in Appendix B: Paralleling UPS Devices on page 38.

19. Press the "Menu" button.

20. Select Submenu "Control."

21. Press "OK."

22. Select Submenu "Turn UPS ON/OFF."

23. Press "OK" The control panel displays "Turn UPS to Online"

24. Press "OK" to switch the inverter on.

25. The green "ON" LED should be illuminated and the UPS should be in "Online" operation.

**Instructions
for
Returning a
Depleted
Battery
Pack**

ONEAC provides for pre-paid return of depleted batteries with all replacement battery purchases. Just follow these simple steps:

1. Remove the new battery pack and install it in the ONEAC unit as per the installation instructions. Put the UPS A.R.S label aside.
2. After the battery pack has been replaced, place the depleted battery pack in the box the same way the new battery was packaged and seal the box.
3. Follow the return instructions on the back of the the attached UPS A.R.S. label and affix to the box.
4. To return to ONEAC for proper recycling (at no cost to you), give the box to any UPS pick-up driver or call 1-800-742-5877 for the nearest drop-off location.



A HIGHER LEVEL OF CONFIDENCE

ONEAC USA

27944 North Bradley Road
Libertyville, IL 60048-9700
United States
Toll Free: (800) 327-8801
Tel: (847) 816-6000
Fax: (847) 680-5124

ONEAC EUROPE

18 & 20 Blacklands Way
Abingdon Business Park Abingdon, Oxfordshire OX14 1DY United Kingdom
Tel: +44 (0) 1235 534721
Fax: +44 (0) 1235 534197

Visit our website at <http://www.oneac.com>

ONEAC, ON Series are trademarks of ONEAC Corporation. All other trademarks are the property of their respective companies.

Entire contents copyright ©1999 ONEAC Corporation. All rights reserved. Reproduction in whole or in part without permission is prohibited. All information subject to change without notice.

Printed in the U.S.A. Part No. 913-417 Rev.



All ONEAC-manufactured products are Y2K compliant.

ONEAC is a
UL/BSI
registered firm.
Certification
No. A2900.



A Chloride Power Protection Company